

CW25 Demo Kit User Manual

Issue: R00

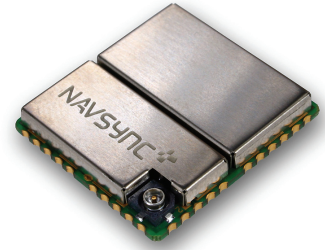


Table of Contents

1.	Introduction	3
2.	CW25 Demo Board Overview	4
3.	General Specifications	5
3.1	Operating Specifications	5
4.	Interfaces	6
4.1	Power	6
4.2	CW25 (U3)	6
4.3	UART Connections (J1, J2, J3)	6
4.4	Antenna Connection (J8)	7
4.5	Power On and Reset Switches	7
4.6	LED Indicators	7
4.7	Timing Outputs	7
5.	Operating Instructions	9
6.	Connector Pin outs	10
6.1	Jumper Description & Settings	10
6.2	RS232 DB9 Connectors	10
6.3	DC Power Connector	11
6.4	SMA Timing and Event-In Connectors	11
6.5	TNC Antenna Connector	11
6.6	External Clock Connector	11
6.7	Auxiliary Connector	11
6.8	JTAG Connector	12
	Appendix 1 Demo Board Schematic	1

1. Introduction

The CW25 Demo Kit is a complete development platform for the CW25 GPS receiver (CW25). It is comprised of the CW25 Demo Board and peripherals that support its operation. The CW25 is a small size OEM module specifically designed for use in weak signal GPS environments and where there is a requirement for highly accurate timing. Refer to CW25 User Manual for details. The Full CW25 Demo Kit includes:

- CW25 Demo Board
- Interface DB9 Serial RS232 Cable
- Power Supply Adaptor (Region Specific) with 2.1 mm plug.
- Magnetic Patch Antenna with a 3m lead
- CD, which provides Navsync Manuals, datasheets and GPS Parser Software, NS3K View.

The CW25 Demo Board can be purchased individually with a pick-and-choose option for accessories. This may reduce cost if the customer already possesses such accessories.

2. CW25 Demo Board Overview

The main purpose of the CW25 Demo Board is to provide a power supply, battery backup, RS232 interface and easy access to the CW25 functionality. A TNC connector is available for an active antenna and SMA connectors are on board for easy connection to the timing, 1PPS and frequency outputs. Access to the Event-In pin is also available through an SMA connection. The antenna power is provided by on-board circuitry. A connection point (BT1) is available as an alternate to the 2.1 Barrel Socket for a DC power supply. If field tests need to be carried out, a 4AA battery pack can also be attached to the BT1 connection port.

The CW25-Demo Board is a stand-alone GPS board, providing simple interfaces to host systems such as a PC.

The Demo Board provides:

- On-board CW25-NAV (Navigation) or CW25-TIM (Timing)
- 3.3VDC Power Regulation, which allowing input voltage of 4.5VDC to 25VDC
- RS232 Interface to each of the 3 UARTs of the CW25: NMEA, Debug, Net Assist
- RF-IN Female TNC connector
- SMA CO-AX connector for the 1PPS and Frequency outputs (CW25-TIM only)
- Battery Backup Circuit for the CW25's RTC when power is not applied.
- LED Indicators for GPS status, Power status and a 1PPS blinking LED
- Current measuring headers at the CW25 power supply inputs
- Reset and Power switches

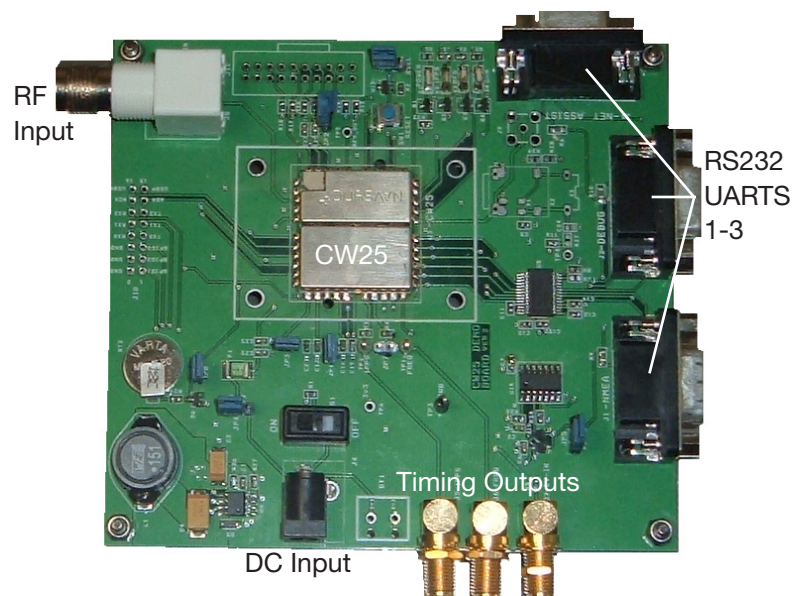


Figure 1 CW25 Demo Board

3. General Specifications

If not otherwise specified, all performance data refers to the CW25.

3.1 Operating Specifications

Parameter	Min	Typical	Max	Units
Operating Temperature	-30		+65	°C
Power Supply Voltage (VDC)	4.5	5	25	VCC
Power Consumption		0.62		W
UART Interfaces (x3) J1, J2, J3	D-SUB 9-WAY, RS232			
Active Antenna Connector	TNC Socket Female			
Power Connector (DC)	2.1mm Barrel, Center Positive [Cliff DC-10]			
Dimensions	125 x 120 x 30mm (approx, Board Only)			
Weight	128g (approx, Board Only)			

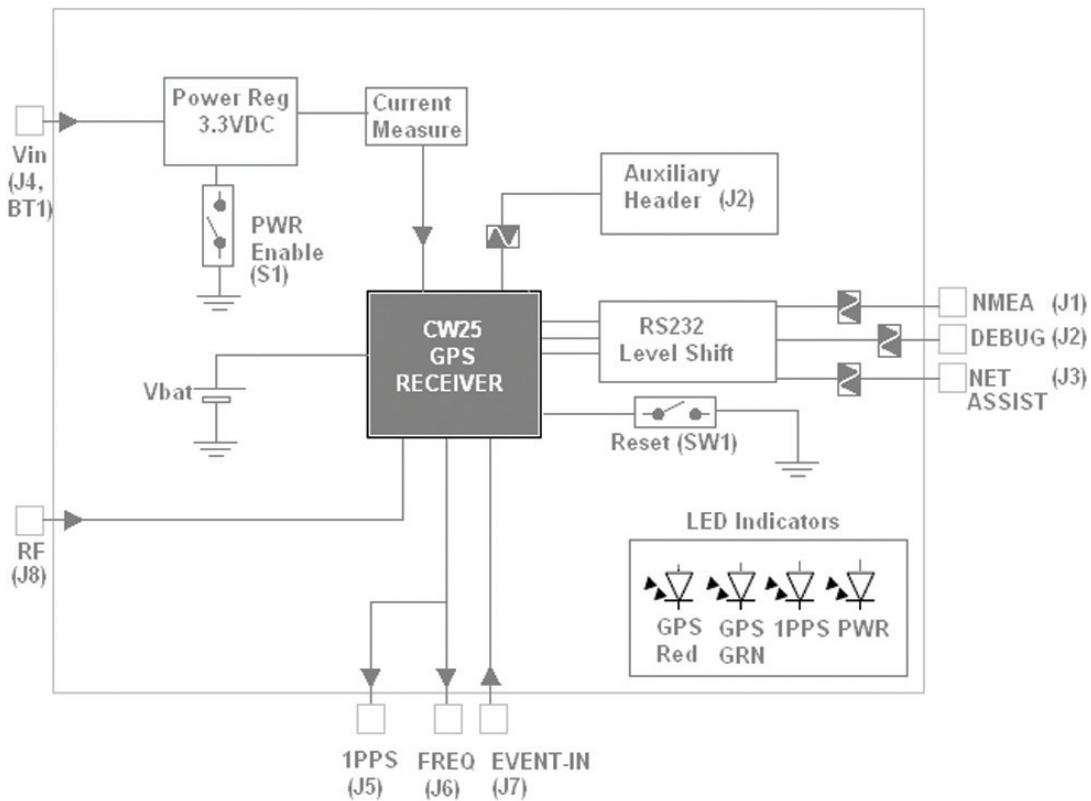


Figure 2 CW25 Block Diagram

4. Interfaces

4.1 Power

The CW25 Demo Board can be operated from two sources of DC power: a standard DC Power adaptor with a 2.1mm DC Plug connected to J4, or the alternative connection point BT1, a battery pack or DC cables which can be soldered directly to the \pm terminals.

4.2 CW25 (U3)

The CW25-TIM or CW25-NAV is mounted on the board, depending on the Demo version ordered. Please see the CW25-TIM and CW25-NAV datasheets along with the CW25 User Manual for detailed information.

4.3 UART Connections (J1, J2, J3)

The CW25 Demo provides RS232 level shifting (TX, RX, GND) to interface the CW25 GPS receiver with a PC via either a standard serial port or a USB-serial adapter (example Roline USB Type A -serial DB9ST). For detailed information of data streams and command format refer to User Manual.

UART 1 (J1) - Main UART of the CW25, for NMEA message and Command Configurations

UART 2 (J2) - Debug Messages

UART 3 (J3) - Net Assist

4.4 Antenna Connection (J8)

The antenna is connected using the female socket TNC connector, J8, on the CW25-Demo Unit. A patch antenna is supplied with the kit. If the necessary antenna has a different connector, a suitable adaptor is required. The Demo Board provides 3.3VDC at the antenna jack to power active antennas. Higher voltage antenna can be accommodated (up to +15VDC) by routing the input power V_{in} to power the antenna. Jumper header JP4 determines the source power for the antenna. The jumper is placed in the 'P2' position for direct DC-IN or P1 for the standard 3.3VDC on-board supply. If the 'P2' position is used the board supply input voltage must remain below 15VDC. Care must be taken to insure that no more than 50mA is drawn from the Antenna connection otherwise damage may be caused to the CW25 unit.

4.5 Power On and Reset Switches

The Power-On Slide Switch, S1, enables the 3.3VDC Regulator. When power is connected to the board and S1 is in the 'ON' position, the yellow LED, D1 will be fully ignited.

The Reset Push switch, SW1, is connected to the NPOR signal of the CW25 unit. This can be pushed to reset the CW25.

4.6 LED Indicators

Power-ON LED, D1

This yellow LED is fully on when 3.3VDC is applied to the Board.

1PPS LED, D2

This 1PPS LED toggles ON/OFF when the 1PPS signal is present.

GPS Status Red, D3

On the standard CW25-TIM and NAV software builds, the GPS Red works as follows:

- Long red flash for invalid GPS fix
- Short red flashes for satellites tracked, but not used in solution.

GPS Status Green, D4

On the standard CW25-TIM and NAV software builds, the GPS Green works as follows;

- Long green flash for a valid 2D/3D fix
- Short green flashes for number of satellites used in solution

4. Indicators continued

4.7 Timing Outputs

1PPS Output

SMA, J5 - female standard socket. The 1PPS signal from the CW25 is available here. It is directly connected to Pin 38 through a 33 ohm resistor.

A buffered 1PPS is also available on Pin 1 of each of the DB9 connectors. This signal can be inverted by selecting the 'P2' position of jumper header, JP5. Otherwise the Jumper is placed on 'P1' for the standard non-inverting buffered 1PPS.

Please note that these buffered 1PPS signals are CMOS levels, not RS232 levels.

Frequency Output

SMA, J6 - female standard socket. The default frequency from the CW25 is 10Mhz. The SMA conductor is directly connected to Pin 39 through a 33 ohm resistor. (Output is only available on the CW25-TIM version)

Event -In Input

SMA, J7 - female standard socket. Connected to the Event-In (Pin 39) of the CW25. This is connected through a 33 ohm resistor.

5. Operating Instructions

1. Connect the Antenna to the TNC socket, J8
2. Place the Patch antenna in a sky view location
3. Connect a RS232 data cable (also an available accessory) to the NMEA Port, J3
4. Connect the remaining end of the cable to the RS232 COM port on a PC
5. Open Terminal Window or NavSync NS3K View GPS parser on the PC, with communications setting set to match the COM port used and the baud rate set to 38400 (default)
6. Connect the Power supply to the Board
7. Place the Slide Switch, S1, to position 1 to switch Power ON
8. The unit should start to stream data
9. Once the unit achieves a GPS lock, timing outputs (CW25-TIM only) will be valid and present

6. Connector Pin outs

6.1 Jumper Description & Settings

JUMPER	DESCRIPTION	Normal Position
JP1	DIG Power to CW25, 3.3VDC	ON
JP2	RF Power to CW25, 3.3VDC	ON
JP3	DIG Power to CW25, 1.8VDC	ON
JP4	Antenna Supply, P1: 3.3VDC P2: Powered directly from J4/BT1	P1
JP5	Buffered 1PPS to J1/J2/J3(Pin1) Selection P1: 1PPS+(NON-INV) P2: 1PPS-(INV)	P1
JP6	Bootsel, Only to be placed when programming	OFF
JP7	Freq out to Event-in, Only placed for special SW builds	OFF
JP8	VBAT POWER TO CW25	ON

6.2 RS232 DB9 Connectors

J1 - NMEA and Command		J2- Debug		J3 - Net Assist	
Pins	Description	Pins	Description	Pins	Description
1	1PPS+/1PPS- Buffered	1	1PPS+/1PPS- Buffered	1	1PPS+/1PPS- Buffered
2	TX0 RS232 Levels	2	TX1 RS232 Levels	2	TX2 RS232 Levels
3	RX0 RS232 Levels	3	RX1 RS232 Levels	3	RX2 RS232 Levels
5	GND	5	GND	5	GND

6.3 DC Power Connector

The DC power connector is a 2.1mm Barrel center positive socket connector [Cliff Component: DC-10A]

J4- DC -IN	
Pins	Description
CENTER	DC Power in + (4.5-25v)
OUTER	DC Power in - (GND)

6.4 SMA Timing and Event-In Connectors

J5 1PPS

Connected directly to Pin 38 of the CW25 via a 33ohm resistor

J6 Frequency Out

Connected directly to Pin 39 of the CW25 via a 33ohm resistor

J7 Event In

Connected directly to Pin 37 of the CW25 via a 33ohm resistor

6.5 TNC Antenna Connector

This TNC is a standard TNC socket.

J8 RF-IN

A GPS TNC active antenna can be connected here. Power is supplied to the antenna from the Demo Board, see JP4 description.

6. Connector Pin outs continued

6.6 External Clock Connector

J9- Not fitted on demo board, only used for special hardware builds of the CW25

6.7 Auxiliary Connector

The pins on this non-fitted connector are directly connected to the CW25

J10 Auxiliary Connections

Pins	Description	Pins	Description
1	GPIO1(PIN 40)	9	TX1(PIN 5)
2	GND	10	RX1(PIN 6)
3	GPIO2(PIN 41)	11	TX2(PIN 3)
4	GND	12	RX2(PIN 4)
5	GPIO3(PIN 42)	13	N2WDA(PIN 29)
6	GND	14	N2WCK(PIN 28)
7	TX0(PIN 1)	15	USBP(PIN 30)
8	RX0(PIN 2)	16	USBN(PIN 31)

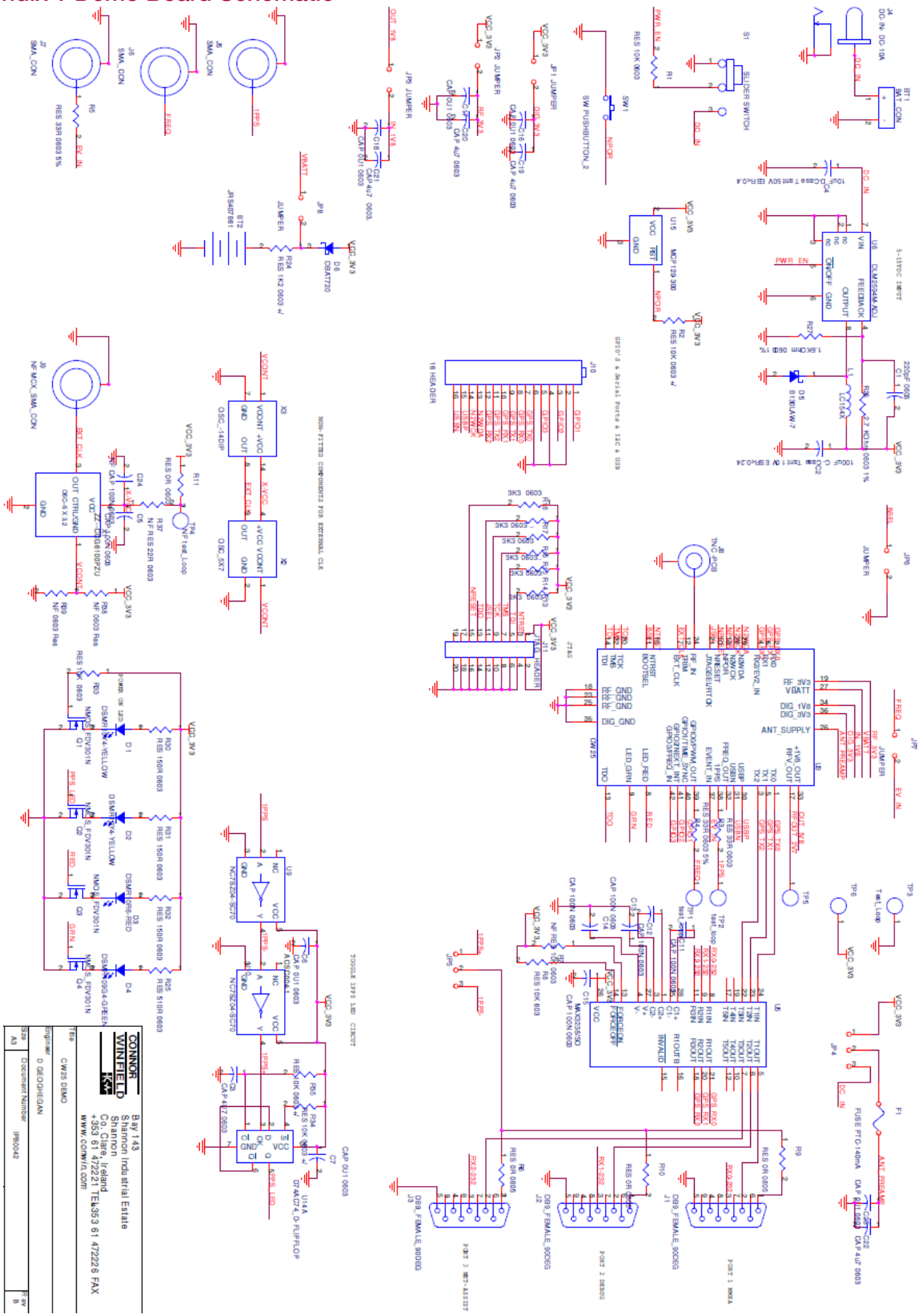
6.8 JTAG Connector

The pins on this non-fitted connector are directly connected to the CW25

J11 JTAG Connections

Pins	Description	Pins	Description
1	VCC 3.3VDC	11	JSEL (PIN 21)
2	VCC 3.3VDC	12	GND
3	NTRST (PIN 15)	13	TDO (PIN 13)
4	GND	14	GND
5	TDI (PIN 14)	15	NRESET (PIN 10)
6	GND	16	GND
7	TMS (PIN 22)	17	NC
8	GND	18	GND
9	TCK (TDI)	19	NC
10	GND	20	GND

Appendix 1 Demo Board Schematic



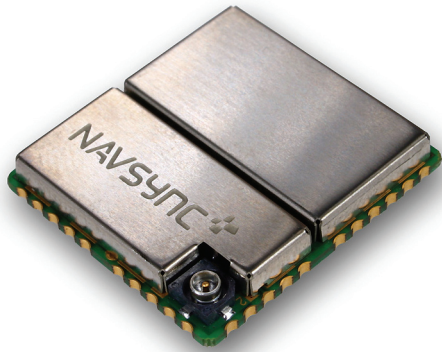
CONNOR WINFIELD
 Bay 143
 Shannon Industrial Estate
 Shannon, Ireland
 Co. Clare, Ireland
 +353 61 472221 TEL:953 61 472228 FAX
 WWW.CONNORWIN.COM
 Signature: D GEORGHIAN
 Title: CW25 DEMO
 Part Number: 190042
 Rev: B

CW25

Demo Kit

User Manual

Issue: R00



Revision	Revision Date	Notes
P00	02/03/09	Release
R00	02/16/09	Public Release

NavSync, Ltd. Europe

Bay 143
Shannon Industrial Estate
Shannon, Co. Clare, Ireland
Phone: +353 61 475 666
E-mail: sales@navsync.com

North America

2111 Comprehensive Drive
Aurora, IL 60505, USA
Phone: 630.236.3026
E-mail: northamerica@navsync.com
www.navsync.com