

Papillon Creations

Let your fingers fly!

Winter Wood

This chart is a gift from me to you, to thank you for subscribing to my newsletter. It is a small design which you can use to make a seasonal ornament, pincushion or card insert.

Choose threads and beads from your "stash" by following the guidelines in the key. Detail diagram below show how to work the speciality stitches. Happy stitching!

Work the following stitches in the following colours:

Central snowflake and pulled square eyelet—blue/purple.

Fishbone stitch leaves—green

Fly stitch garland—green

Queen stitch berries—red with green leaves

Birds beak/feet/wing—black

Outer Rhodes diamonds—blue

Outer woven ray stitches—brown

Design size: 54 x 54 stitches

Finished stitched size:

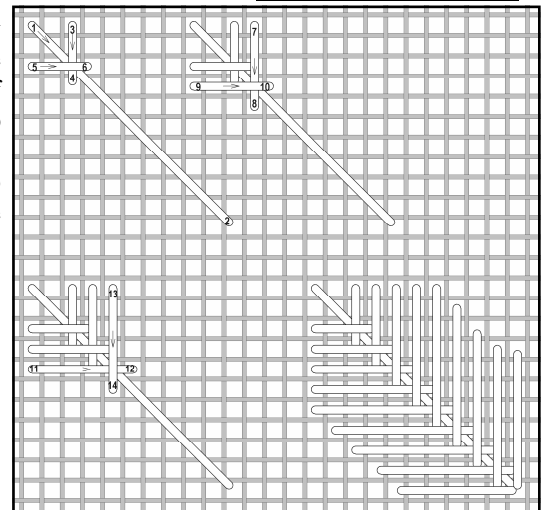
14/28 Count fabric: 10.2 x 10.2 cm (4 x 4 inches)

16/32 Count fabric: 9 x 9 cm (3.5 x 3.5 inches)

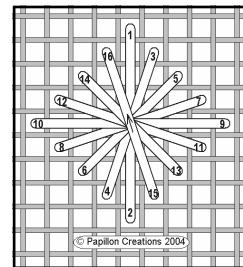
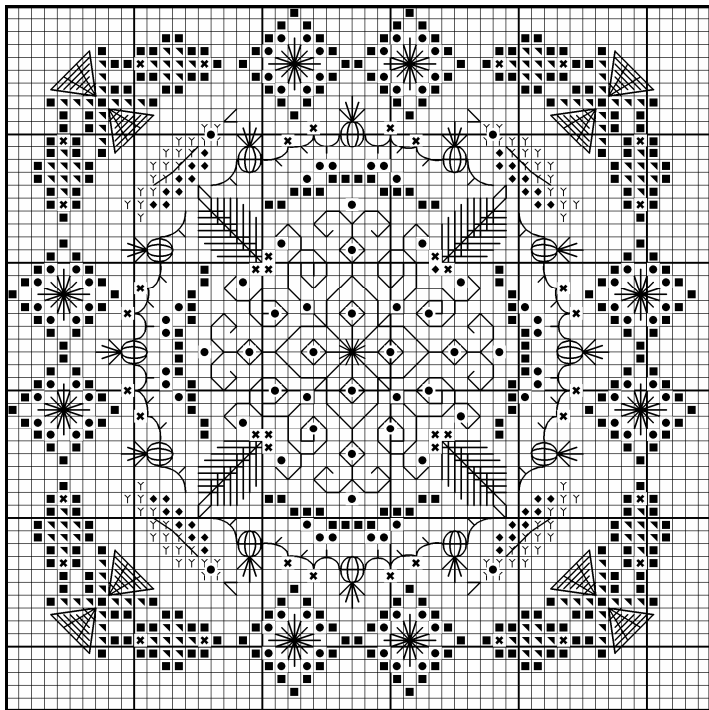
Add at least 5cm (2 inches) to the above measurements, to allow for finishing.

	Colour
◆	Red
Y	Brown
▼	Green
■	White
	Blue/purple
	Black
●	White/crystal beads
✕	Red beads

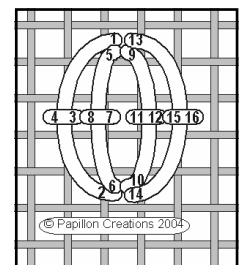
For all speciality stitches—use two strands of floss. Come up at the odd numbers and go down at the even numbers.



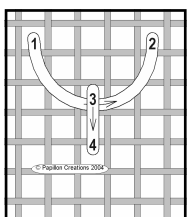
Fishbone stitch leaves



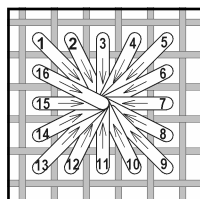
Rhodes diamond



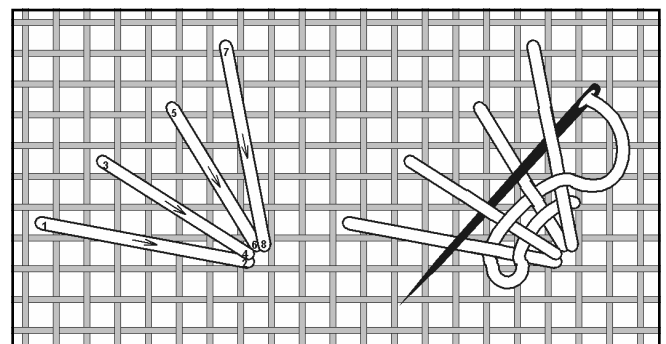
Queen stitch



← *Fly stitch*



Pulled square eyelet



Woven Ray stitch pine cones